

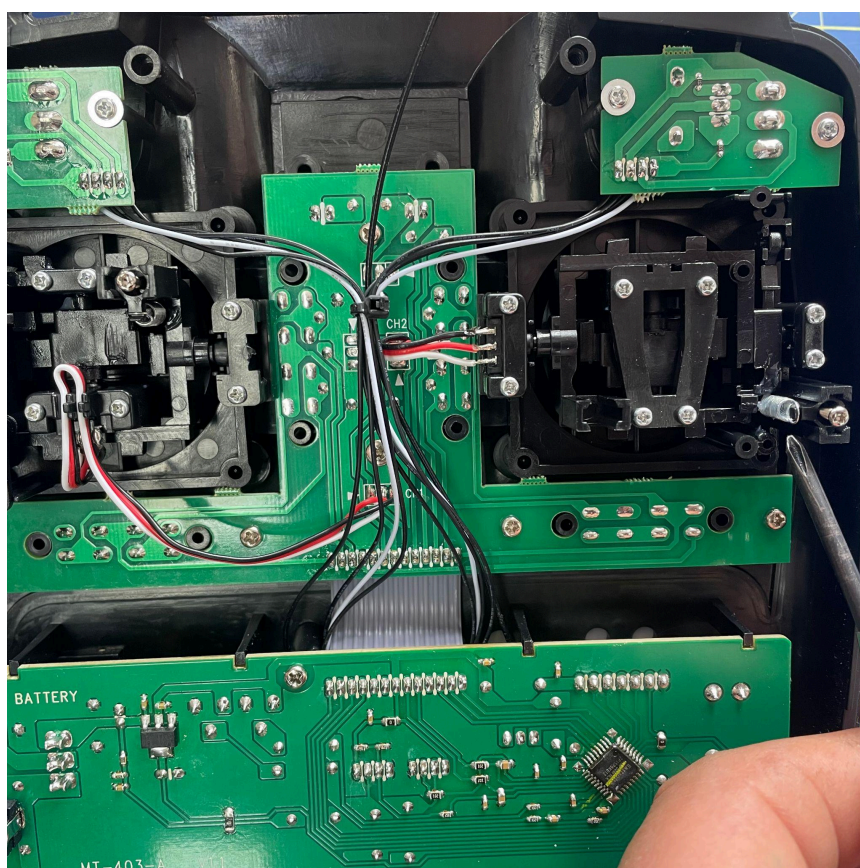
Planet 2+2 Ratchet Fitting Kit

1. Please check you have the following items to complete your installation.

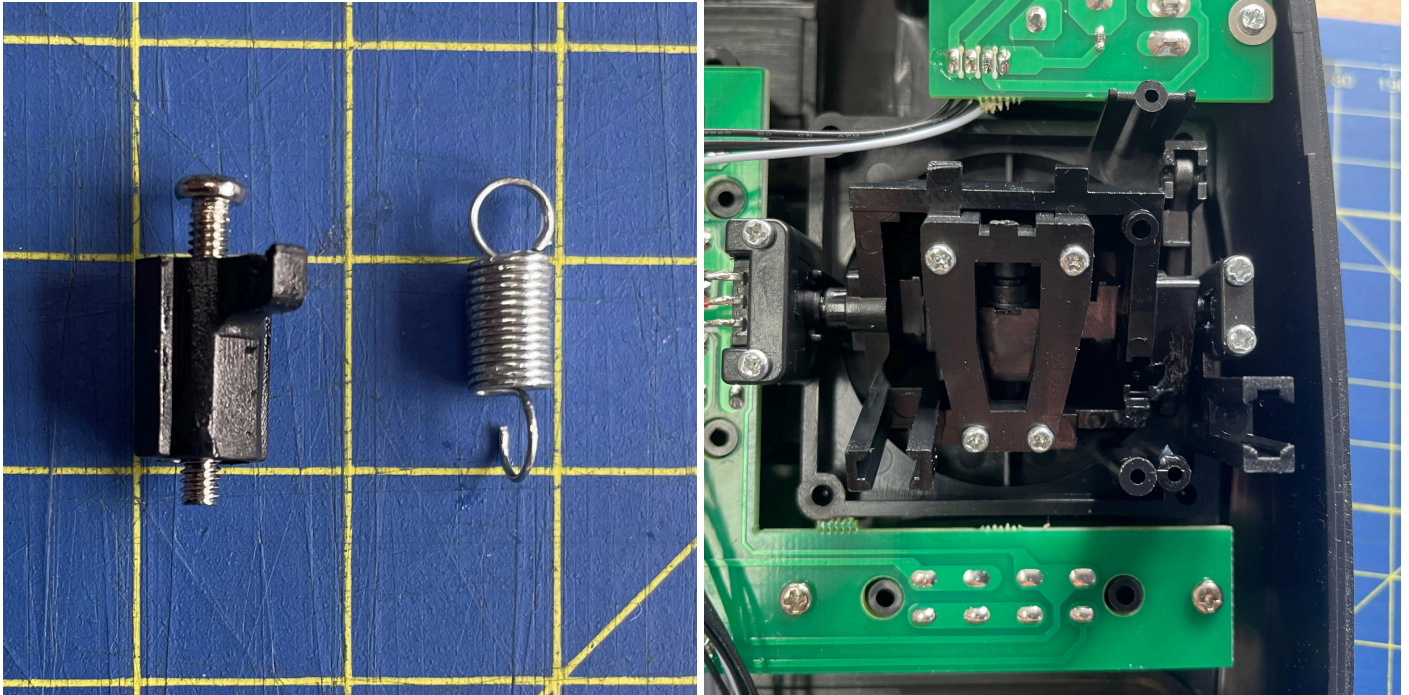


2. Remove the 6 screws from the back of the transmitter and open the case carefully so as to not pull on the battery lead to the back of the transmitter case.

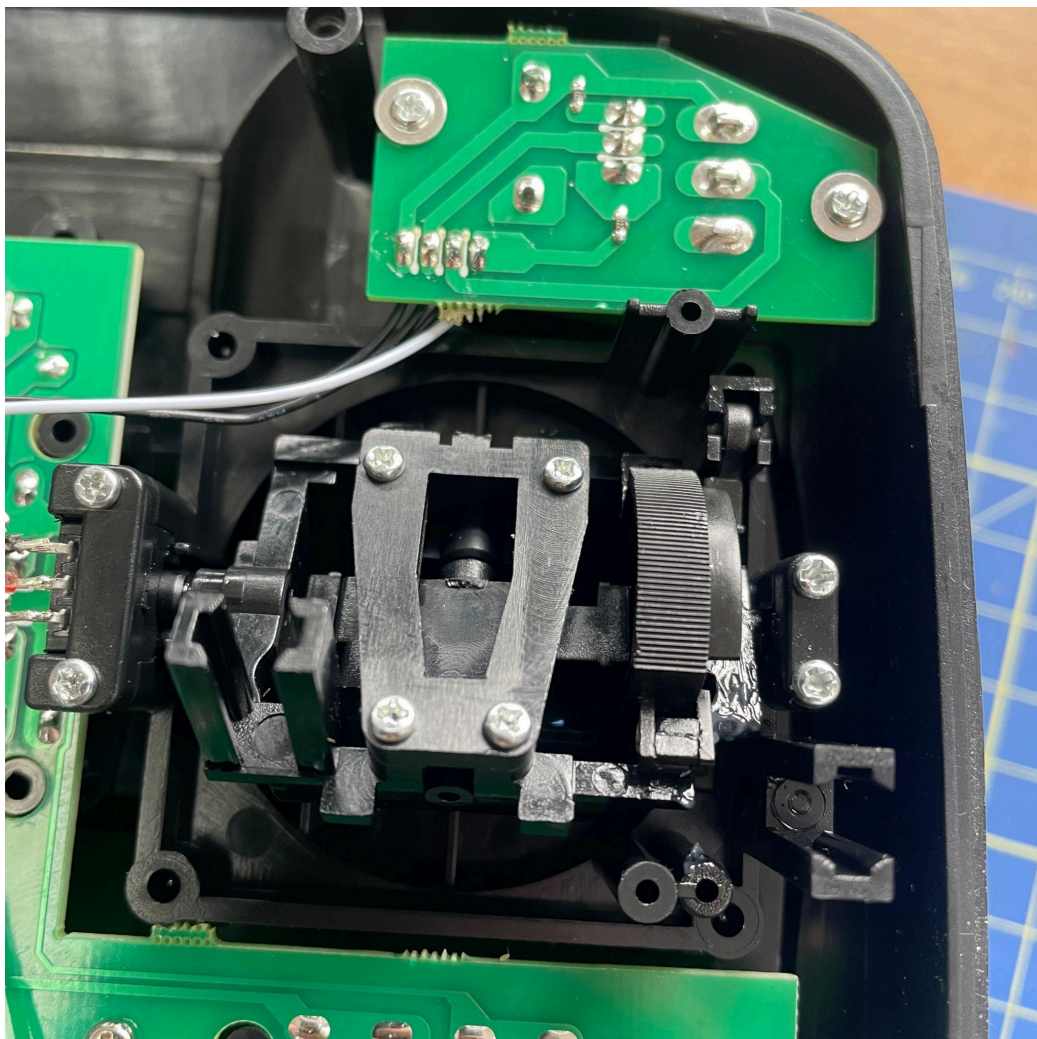
Identify the throttle spring and tensioner as identified by the screwdriver.



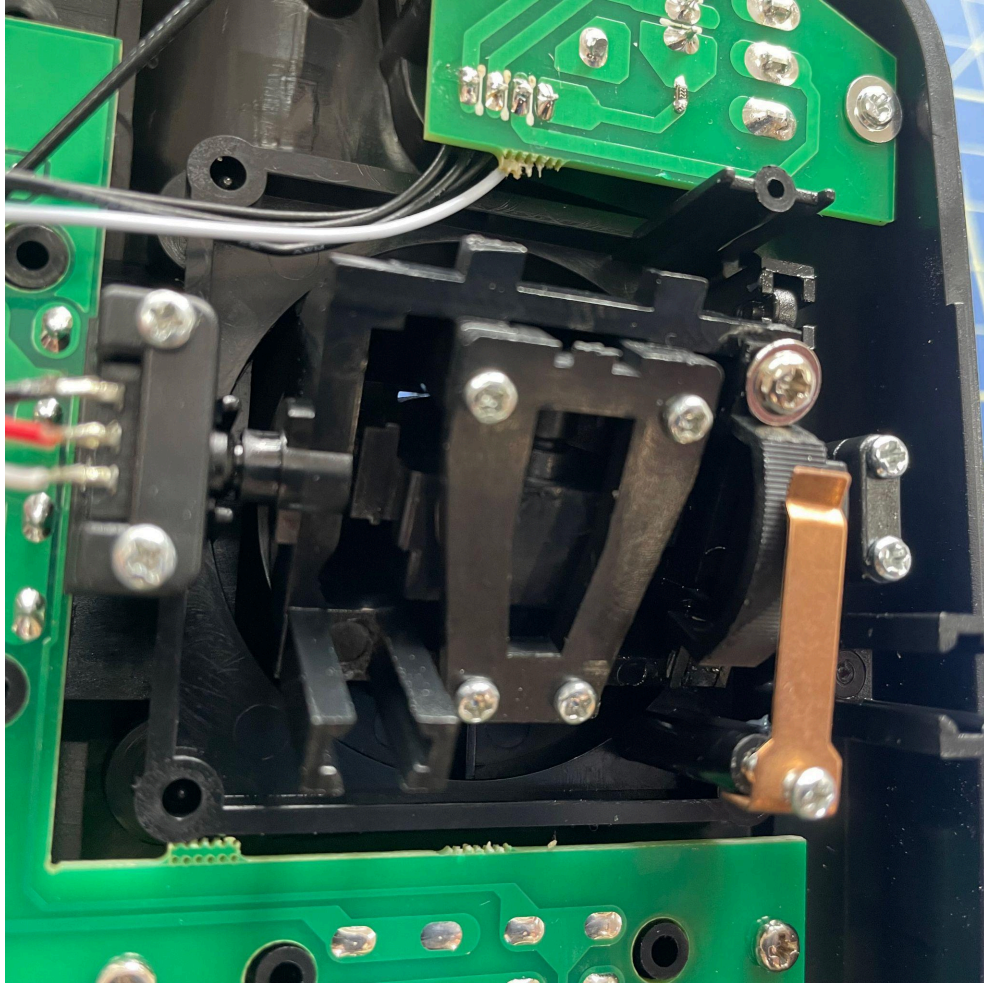
3. Remove the spring and tensioner. This is done by releasing the spring from the tensioner with a pair of thin nose pliers and unclipping the spring from the gimbal. The tensioner should then just pull out.



4. Install the ratchet part of the kit in place as shown. This clips into position at the bottom as shown before securing in place with the screw.



5. Insert the screw at the top as shown and install the brass ratchet arm. The tension on the brass ratchet arm will determine the ratchet feel on the stick so adjust as needed.



Once you are satisfied with the installation replace the rear of the transmitter case making sure no cables are being trapped and secure back in place with the screws.