

Hyper Cub

Limited Edition RC version



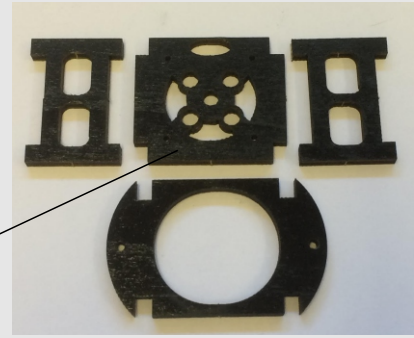
Hyper Cub RC Electric Installation Guide

Recommended set up

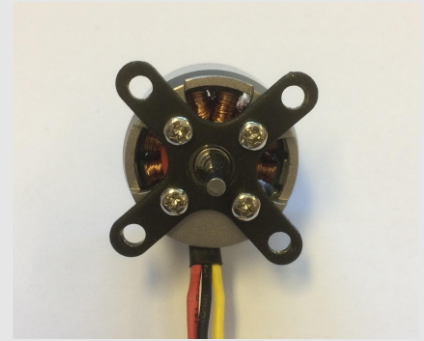
- 2 x Hitec HS-35HD Pt No. 2212030
- 1 x GWS 7x6 slow fly prop Pt No. 4460299
- 1 x ZTW Mantis 12A ESC Pt No. ZTW2012101
- 1 x Roxxy 22-16-25 (1800kv) Pt No. 25314946
- 1 x 2s 400mAh 25c Lipo

Take the wooden motor box components and remove the excess wood ensuring you remove all air ventilation points on the main motor plate.

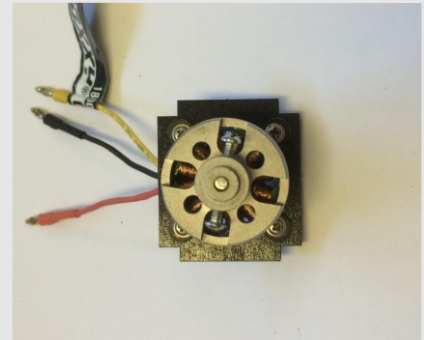
Main motor plate



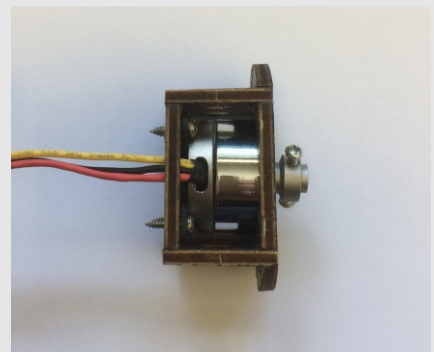
Install the motor back plate to the back of the motor.
WARNING - ensure you use the correct bolts so not to damage the motor windings.



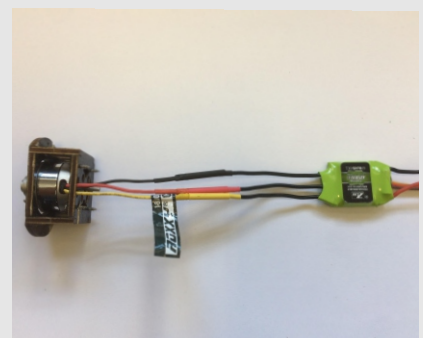
Install the motor to the main plate with four appropriate screws. Ensure to pass the motor wires through the plate before attaching to the motor.



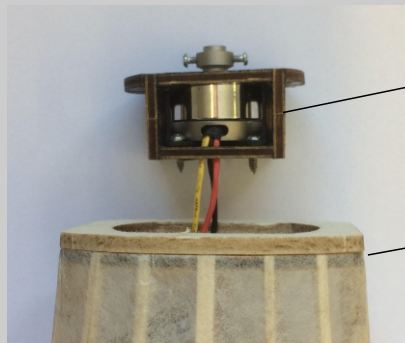
Glue the three other pieces of the motor mount together as shown in the image. Please note that one side is longer than the other to allow for some side thrust, at this stage it does not make a difference which side this goes on.



Connect the ESC to the motor, its always good practice to connect the motor and ESC together and test the direction of rotation before installation.
Warning - always do this with no propeller attached.



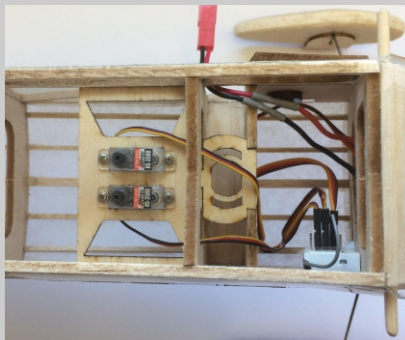
Pass the esc cables through the front of the fuselage, the battery plug to the battery bay and the receiver connection to the receiver bay in front of the battery. Attach the motor box to the front of the fuselage with the two screws and capture nuts supplied. Ensure the direction of side thrust is pointing to the starboard side of the plane.



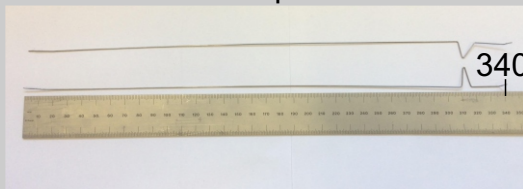
Longest plywood side

Starboard side

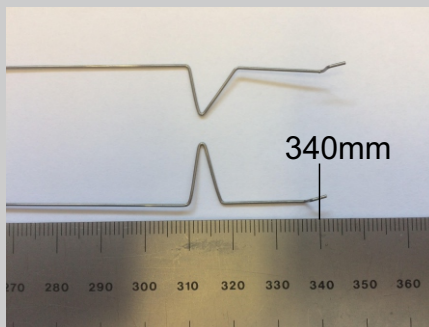
Install the servos as shown and pass the servo wires through to the receiver bay in front of the battery. Connect the wires into the receiver as appropriate and test servo movement and throttle. **WARNING** - make sure your propeller is not attached when testing.



Take the 2 x piano wire`s supplied and make the two push rods as shown in the images. The V sections are so you can mechanically trim the push rod to achieve a neutral elevator and rudder position.

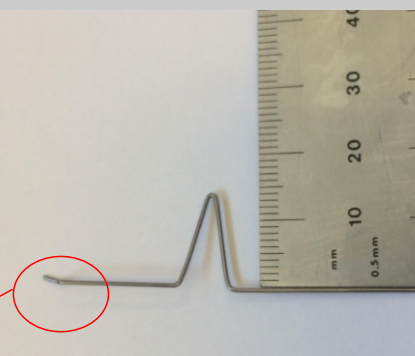


340mm



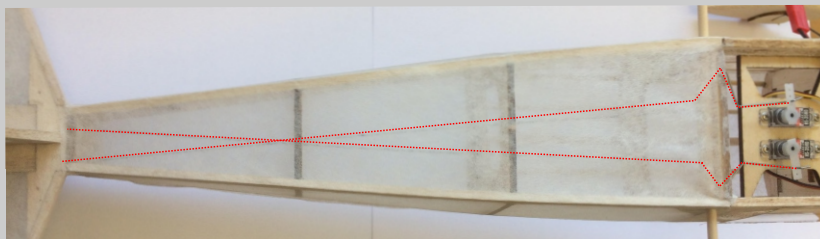
340mm

Put a Z-bend on the servo end only and ensure the Z- bend is in the correct orientation to allow the V bends to lay parallel.

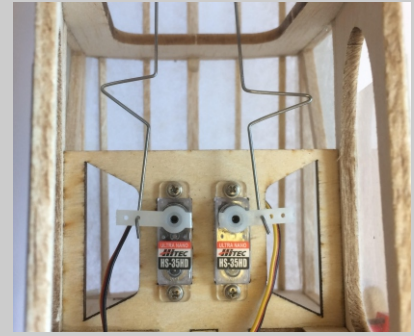
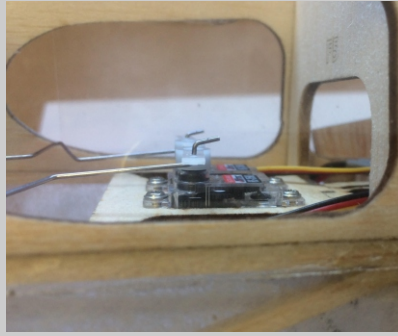


Z-bend

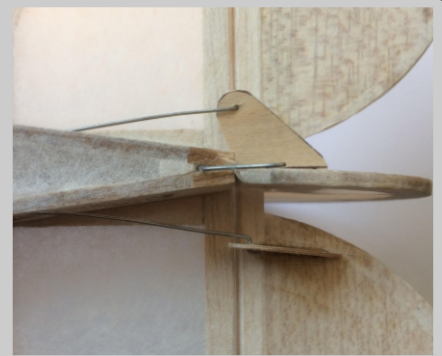
Pass the push rods through the fuselage ensuring they locate through the two push rod supports. The push rods cross over in the fuselage to allow free movement.



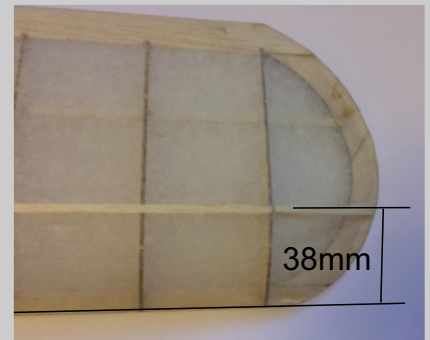
Connect the Z-bends to the servo horns and position in the centre position as shown.



At the other end of the rod, position the control horns so the connection point is over the control surface hinge point. You will need to make a slit in the wood for the control horn to be inserted. Before gluing in place terminate the push rod with another Z bend and connect to the horn, then glue horn in place ensuring the control surface and servo's are all at the neutral position. Use the V bend if there is slight trimming needed.



Now the installation is complete you need to check the C.O.G. The battery needs to be put in place and the C.O.G needs to be as shown in the image, which is about 38mm from the leading edge.



Recommended control movement

| | | |
|---------------------|-------------|----------------|
| Elevator UP / DOWN | 5MM - 15MM | EXPO 10% - 25% |
| Rudder LEFT / RIGHT | 10MM - 15MM | EXPO 10% - 25% |

Please always remember to do a range check before your first flight and always fly safe.

Distributed by

J Perkins Distribution
Northdown Business Park, Lenham, Kent, ME17 2DL

www.jperkins.com